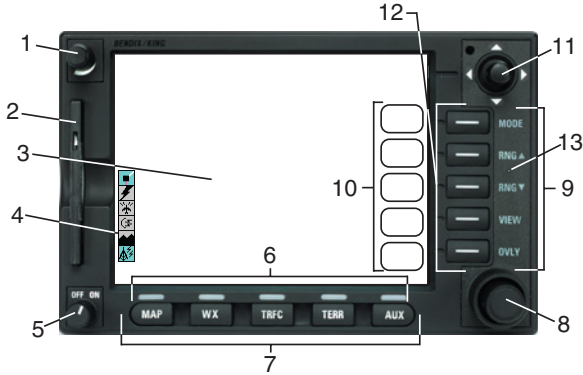


BENDIX/KING®

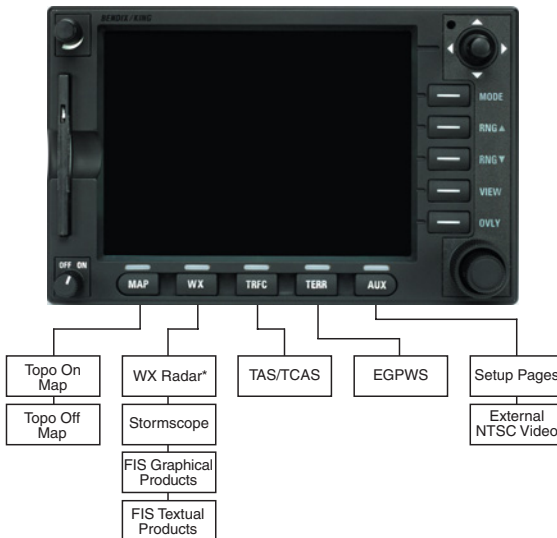
KMD 550/850 Multi-Function Display Quick Reference

For Software Version 01/14 or Later



- | | |
|---------------------------------|---|
| 1. Brightness Control | 8. Control Knobs (Inner and Outer Knob) |
| 2. Data Card | 9. Power Labels |
| 3. Display | 10. Soft Labels |
| 4. Available Functions Legend | 11. Joystick |
| 5. On/Off Control | 12. Power Keys |
| 6. Selected Function Indicators | 13. Fault Indicator |
| 7. Function Select Keys | |

FUNCTION SELECT KEYS



AVAILABLE FUNCTIONS ICONS

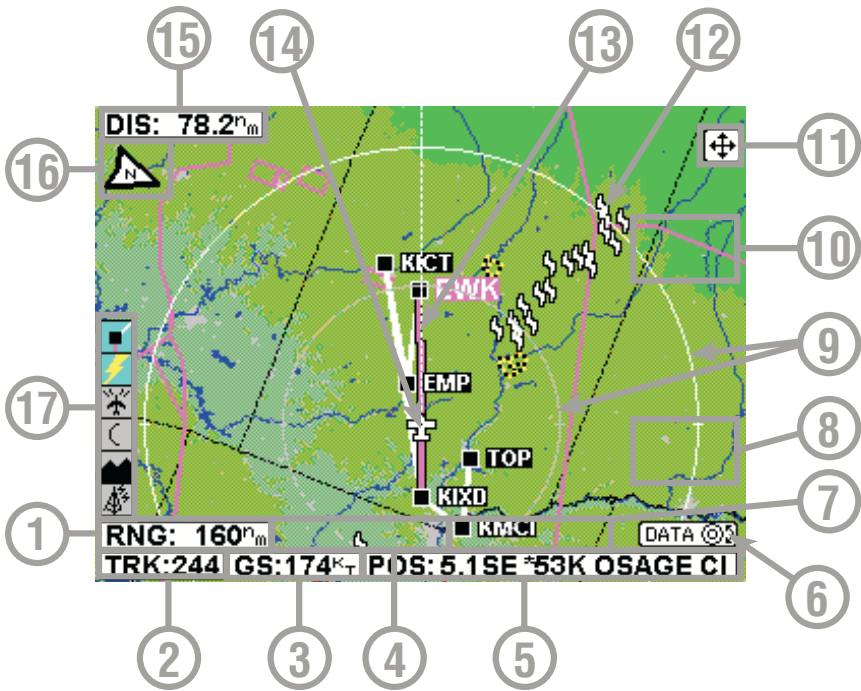
Icon	Description
	Flight plan information being received and displayed.
	Flight plan information being received but not displayed.
	Stormscope® information being received and displayed.
	Stormscope® information being received and displayed. Strikes have occurred within 25 nm.
	Stormscope® information being received but not displayed.
	Stormscope® information being received but not displayed. Strikes have occurred within 25 nm.
	Stormscope® information not being received / data invalid.
	Standby weather radar being displayed.
	Active weather radar being displayed.
	Weather radar in standby mode, not being displayed.
	Weather radar in active mode, not being displayed.
	Weather radar data invalid / not being received. Previously in standby.
	Weather radar data invalid / not being received. Previously active.
	Standby traffic sensor being displayed.
	Active traffic information being displayed.
	Traffic sensor in standby mode, not being displayed.
	TIS service not available.
	Traffic sensor active, not being displayed.
	Traffic sensor data invalid / not being displayed.
	EGPWS with warnings are enabled, being displayed.
	EGPWS with warnings are disabled, being displayed.
	EGPWS with warnings are enabled, not being displayed.
	EGPWS with warnings are disabled, not being displayed.
	EGPWS data invalid / not being received.
	No FIS data is currently being received but previously received data is being displayed on the present page.
	FIS data is currently being received from a signal and displayed on the present page.
	FIS data is not being received or displayed on the present page.
	FIS data is currently being received from a signal but not displayed on the present page.
	Fault with connection or data link radio.
	FIS graphical METAR overlay is available but not displayed.
	FIS graphical METAR overlay is enabled and displayed.
	FIS data not being received. FIS graphical METAR overlay is available but not displayed.
	FIS data not being received. FIS graphical METAR overlay is enabled and displayed.
	VDL radio fault. FIS graphical METAR overlay is available but not displayed.
	VDL radio fault. FIS graphical METAR overlay is enabled and displayed.

INTERACTION OF CONTROLS

	MAP	WX - Radar	WX - Stormscope®	WX - FIS	TRFC	TERR	AUX
JOYSTICK	Used to point at any item on map.	Controls Tilt and Track Line .	Clears Strikes	Used to point at items on map.	Not Active	Not Active	Not Active
MODE	Soft Key /labeled RESET STICK when joystick is active.	Sequence through WX, WX/ARL* and GND Mapping modes.	Sequence through Cell and Strike modes.	Displays SELECT FIS PRODUCT Menu.	Sequence through Relative and Absolute modes.	Selects Terrain Warnings Inhibited* or Enabled* .	Soft Key
RNG ▲	Active	Active	Active	Active	Active	Active	Soft Key
RNG ▼	Active	Active	Active	Active	Active	Active	Soft Key
VIEW	Soft Key /labeled MORE INFO when joystick is active to get more info about items pointed to on the map.	Sequence through Horizontal and Vertical Profile* views.	Sequence through 120° and 360° views.	Not Active	Sequence through Normal, Above and Below views.	Sequence through 120° and 360° views (Default = 360°).	Soft Key
OVLY	Active when overlays available. Brings up overlay select Soft Keys .	Active when overlays available. Brings up overlay select Soft Keys .	Active when overlays available. Brings up overlay select Soft Keys .	Active when overlays available. Brings up overlay select Soft Keys .	Active when overlays available. Brings up overlay select Soft Keys .	Active when overlays available. Brings up overlay select Soft Keys .	Soft Key
OUTER KNOB	Rotate to bring up Airport More Info page and select the airport identifier.	Rotate to select Sby, Tst, On, Set (Default = Sby).	Not Active	Rotate to select report identifier. Also, sequences Graphical Weather Pages.	Rotate to select Sby, Tst, On, Off .	Rotate to select Tst, Nrm, Set (Default = Nrm).	Not Active
INNER KNOB	Rotate to bring up Airport More Info page and select the airport identifier.	Gain control*	Not Active	Rotate to select report identifier. Also, sequences Graphical Weather Pages.	Rotate to select Mute On, Mute Off .	Not Active	Not Active

* Not available in all configurations

MAP FUNCTION



- 1 Display Range - RNG:####nm
- 2 Current Track - TRK:###
- 3 Current Ground Speed - GS:###kt
- 4 Distance to Pointer - PDIS: ###.#nm
- 5 Position Readout - Current aircraft position
- 6 Control Knob Label - Indicates Control Knob is active for data entry
- 7 Bearing to Pointer - PBRG: ###
- 8 MORE INFO Soft Label
- 9 Range Rings - Outer ring radius is selected range, inner ring radius is one half the selected range
- 10 RESET STICK Soft Label
- 11 Joystick Label
- 12 Lightning Overlay
- 13 GPS Flight Plan Overlay - Current GPS flight plan
- 14 Aircraft Symbol - Indicates present position. Stylized airplane when heading input is present, a plus symbol with no heading.
- 15 Distance to Waypoint - DIS:###.#nm
- 16 North Pointer
- 17 Available Functions - Displays icons representing data available (black) and displayed (color)

MAP ICONS

Feature	Conditions	Map Icons		Other Characteristics
		TOPO on	TOPO off	
Political Boundary			Not displayed	
Railway			Not displayed	
Roads	Major		Not displayed	
	Prime		Not displayed	
	Other		Not displayed	
Victor Airways				
Heliroutes				
Airspace Boundary	FIR/UIR			Boundary label will be FIR , UIR , or F/U per airspace type.
	Class A/B/C			Boundary label will be A , B , or C per airspace type.
	Class D/E/F/G			Boundary label will be D , E , F or G per airspace type.
	Class Unknown			
	Danger			Boundary label will be DGR .
	Restricted			Boundary label will be RES .
	Prohibited			Boundary label will be PHB .
	MOA/MATZ			Boundary label will be MOA or MATZ per airspace type.
	Other SUA (Radar Area, Alert, Caution, Training, Warning or Unspecified/Unknown)			Boundary label will be RAD , ALT , CTN , TNG , or WNG . No label for unknown or unspecified.
Cities			Not displayed	
Intersections (INTs)				
Obstacles	Lighted - Tall			Label will indicate MSL elevation followed by AGL elevation in parentheses [e.g. "1546 (590)"]. Tall is defined as over 1,000 ft. AGL.
	Lighted - Short			
	Lighted - Tall			
	Lighted - Short			
NDBs				

Feature	Conditions	Map Icons		Other Characteristics
		TOPO on	TOPO off	
VORs	With DME			
	Without DME			
Airports	Hard runway + IFR approach	Line represents primary runway	Line represents primary runway	If the database does not have runways for the airport, then the icon will not indicate a runway (no line will be displayed).
	Hard runway, no IFR approach	Line represents primary runway	Line represents primary runway	
	IFR approach available	Line represents primary runway	Line represents primary runway	
	Soft or unknown runways	Line represents primary runway	Line represents primary runway	
Airport Runways	Primary, hard surface			Runways are shown for airports within 5 nm of current position and selected range is 10 nm or less. Runway ends are labeled with the proper runway identifier if selected range is 1 nm.
	Other hard surface			
	Primary soft surface			
	Other soft surface			
Helipads				
VRPs			Not displayed	

OVERLAYING DATA



OVERLAY TYPE

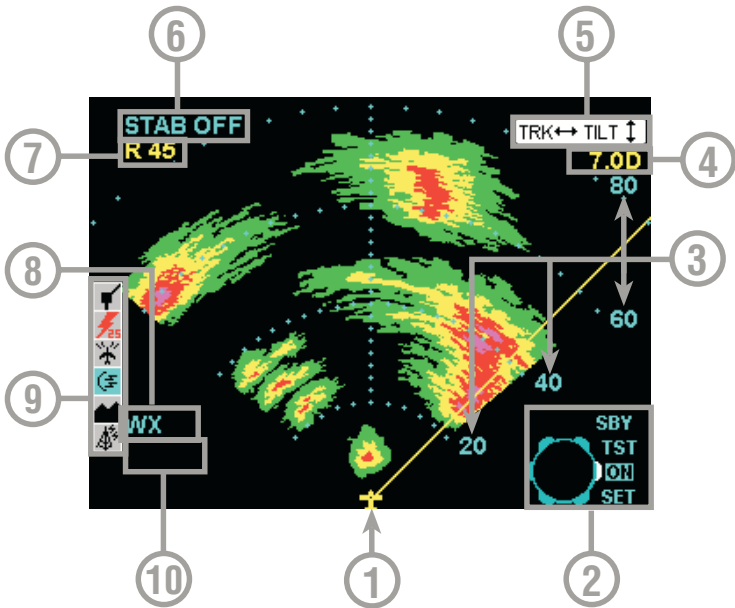
DISPLAY	FLIGHT PLAN	STORMSCOPE®	TRAFFIC	FIS METAR
MAP - TOPO ON	Yes	Yes ¹	Yes ²	Yes
MAP - TOPO OFF	Yes	Yes ¹	Yes ²	Yes
WX - Weather Radar	Yes ¹	Yes	Yes ³	No
WX - Stormscope®	Yes ¹	N/A	No	No
WX - NEXRAD	Yes	Yes ¹	No	No
WX - Graphical METARs	Yes	No	No	N/A
WX - Graphical AIRMETs	Yes	Yes ¹	No	No
WX - Graphical SIGMETs	Yes	Yes ¹	No	No
WX - Graphical Conv SIGMETs	Yes	Yes ¹	No	No
WX - Graphical Wx Watches	Yes	Yes ¹	No	No
TERR	Yes	Yes ¹	Yes ²	No
TRFC	Yes ¹	No	N/A	No

1 Requires remote heading input

2 TCAS/TAS requires remote heading input

3 TIS requires remote heading input

WEATHER RADAR








- 1 **Aircraft Symbol**
- 2 **Knob Function Label** - Rotating the outer knob selects between Standby (SBY), Test (TST), ON and SET modes.
- 3 **Display Range Indications**
- 4 **Tilt Angle** - XX.X Degrees up (U) or down (D).
- 5 **Joystick Function Label** - Moving the joystick up and down adjusts the radar tilt. Moving the joystick left and right adjusts the location of the yellow track line.
- 6 **Stabilization Indication**
- 7 **Track Angle**
- 8 **WX Radar Mode Indication** - TEST, WX, WX/ARL (Auto Range Limiting or MAP (Ground Mapping Mode)
- 9 **Available Functions** - Displays icons representing data available (black) and displayed (color)
- 10 **Fault Message Window** - See Error and Fault Messages

AVAILABLE WEATHER RADAR FUNCTION ICONS

Icon	Description
	Standby weather radar being displayed.
	Active weather radar being displayed.
	Weather radar in standby mode, not being displayed.
	Weather radar in active mode, not being displayed.
	Weather radar data invalid / not being received. Previously in standby.
	Weather radar data invalid / not being received. Previously active.





STORMSCOPE

AVAILABLE STORMSCOPE FUNCTION ICONS







Icon	Description
	Stormscope® information being received and displayed.
	Stormscope® information being received and displayed. Strikes have occurred within 25 nm.
	Stormscope® information being received but not displayed.
	Stormscope® information being received but not displayed. Strikes have occurred within 25 nm.
	Stormscope® information not being received / data invalid.

LIGHTNING ICONS

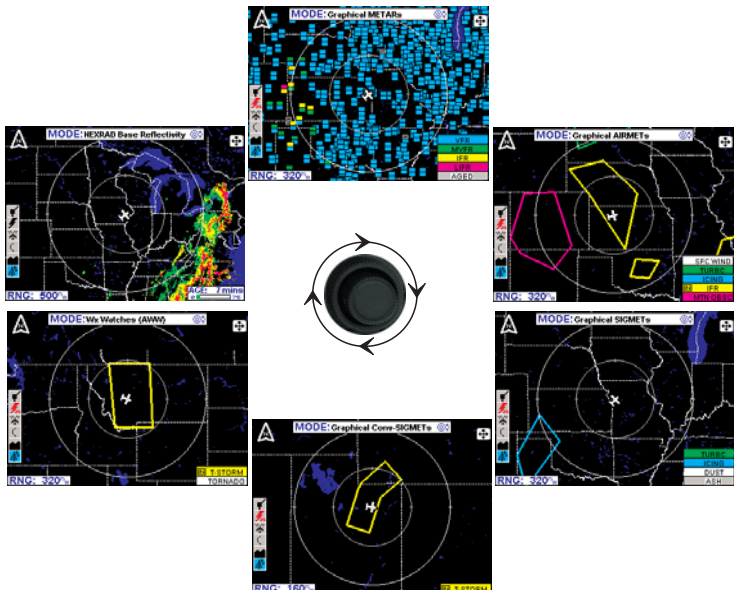
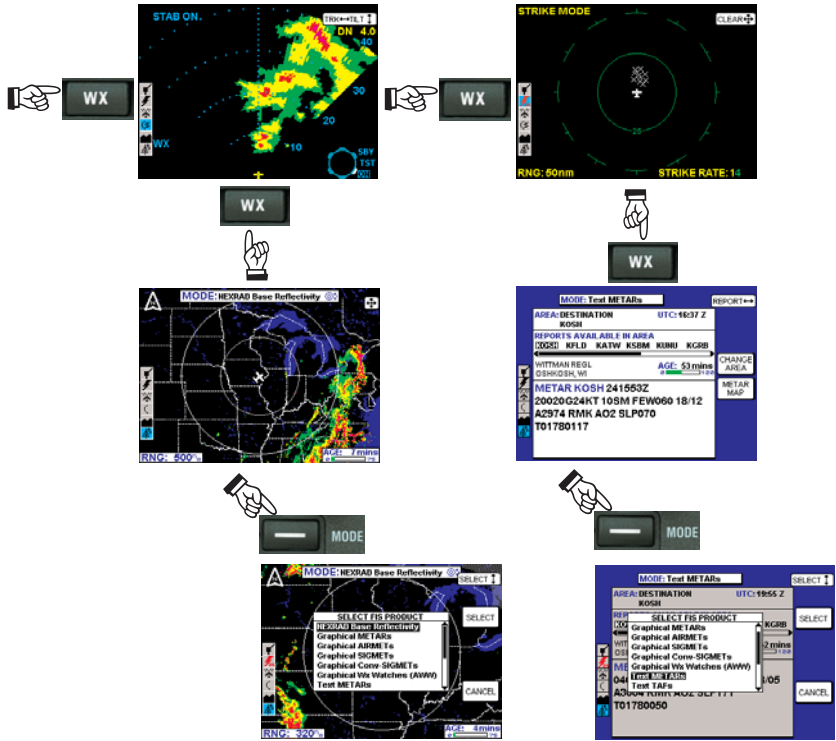
WX-500

Lightning Icon	Color	Used on Pages	Additional Requirements
	White	MAP (TOPO-ON or TOPO-OFF)	The small solid icon is used when the display selected range is 25 nm or greater.
	White	WX, TRFC, TERR	
	White Outline	MAP (TOPO-ON or TOPO-OFF)	The large outlined icon is used when the display selected range is less than 25 nm.
	White Outline	WX, TRFC, TERR	

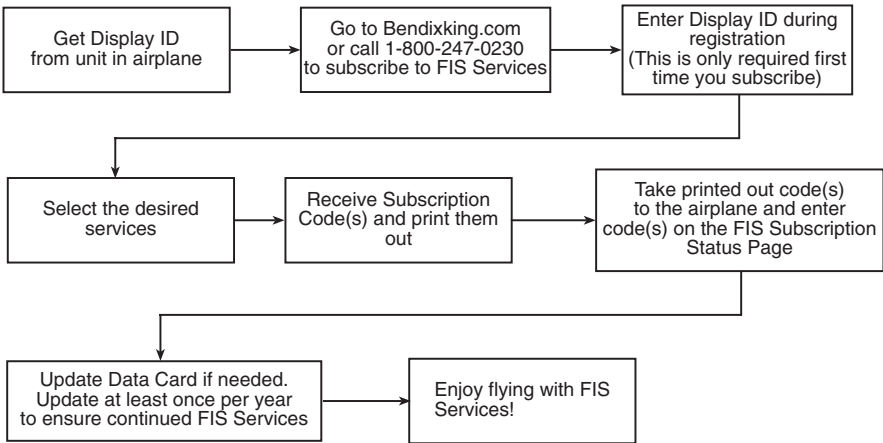
WX-1000E

Lightning Icon	Intensity Level	Color	Used on Pages	Comments
	1 (Light)	White with black border	MAP, WX, TERR	The small solid icon is used when the display selected range is 25 nm or greater. <i>The WX-1000E indicates areas of lightning detected (not individual discharges). Light activity (level 1) is an area with up to 8 strikes/minute; moderate (level 2) is an area with 9-25 strikes/minute and heavy (level 3) is an area with 26 or more strikes/minute.</i>
	2 (Moderate)			
	3 (Heavy)			
	1 (Light)	White with black border	MAP, WX, TERR	The large outlined icon is used when the display selected range is less than 25 nm. <i>The larger icon reminds the user that the accuracy of lightning placement is not as good as that suggested by the map scale.</i>
	2 (Moderate)			
	3 (Heavy)			

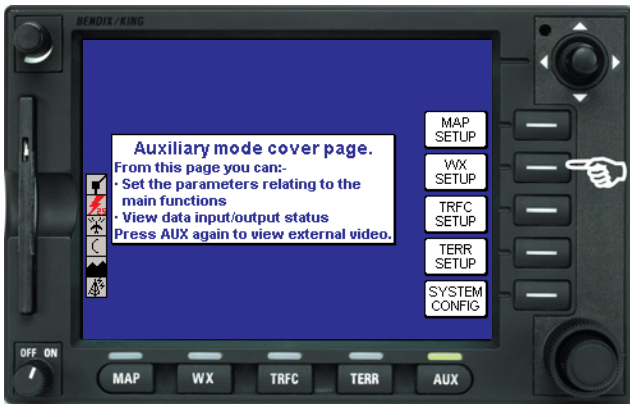
FLIGHT INFORMATION SERVICES DATALINK WEATHER



SUBSCRIBING TO FIS SERVICES

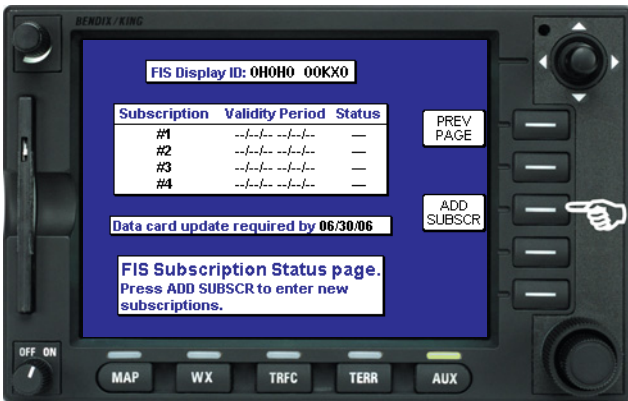


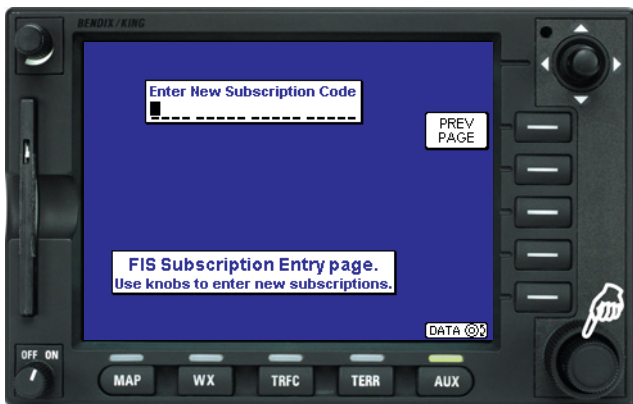
SETTING UP A FIS SUBSCRIPTION



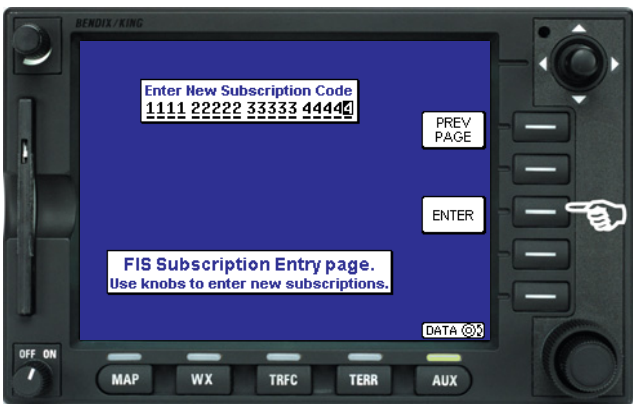


Note the FIS Display ID and contact Wingman Services at www.bendixking.com or call 1-800-247-0230. This ID is used to obtain the Subscription Code. After obtaining the Subscription Code press the **ADD SUBSCR** Key.

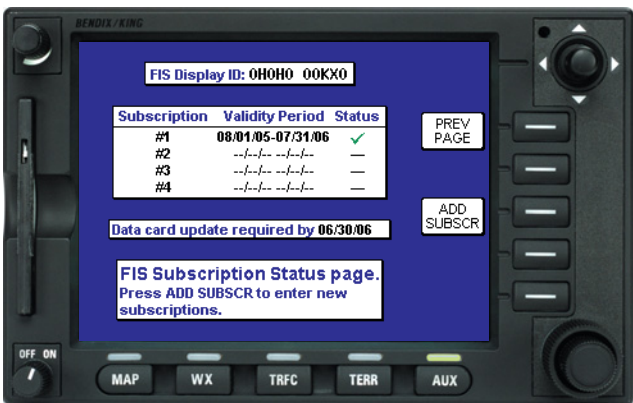




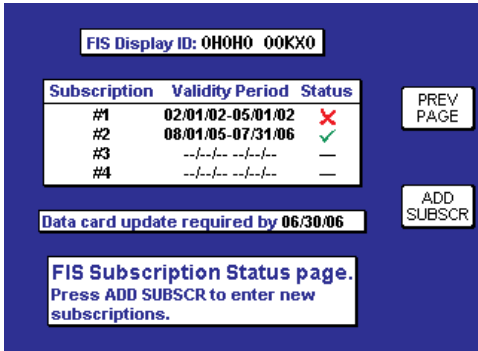
Use the inner knob to enter characters and the outer knob to move to the next field.



After the last character is entered, press the **ENTER** Key. After the subscription is accepted it will be displayed.



CHECKING FIS SUBSCRIPTIONS



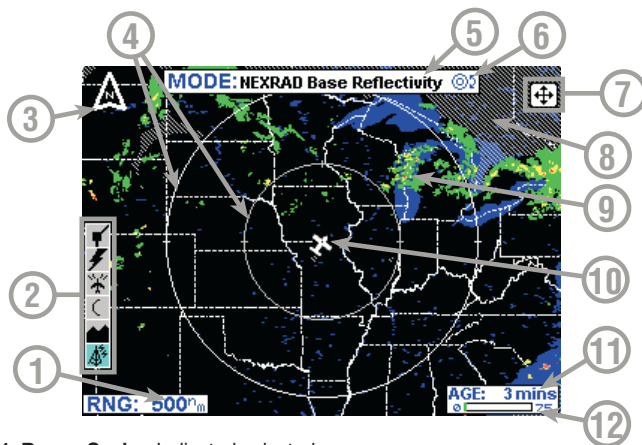
Symbol	Status	Description
—	Unknown	The system time is not known or no subscription is programmed.
!	Future	The current system time is prior to the displayed starting date. This subscription is not valid for enabling access to FIS today but it will become valid at some point in the future.
✓	Valid	The current system time is after the displayed starting date and before the displayed ending date.
✓	Almost Expired	The current system time is within seven (7) days of the displayed ending date.
✗	Expired	The current system time is beyond the displayed ending date.

NOTE: Only the validity period for subscriptions is shown on the display. To determine which products are available with each subscription, access the account on Wingman Services at www.bendixking.com.

AVAILABLE FIS FUNCTION ICONS

Icon	Description
	No FIS data is currently being received but previously received data is being displayed on the present page.
	FIS data is currently being received from a signal and displayed on the present page.
	FIS data is not being received or displayed on the present page.
	FIS data is currently being received from a signal but not displayed on the present page.
	Fault with connection or data link radio.
	FIS graphical METAR overlay is available but not displayed.
	FIS graphical METAR overlay is enabled and displayed.
	FIS data not being received. FIS graphical METAR overlay is available but not displayed.
	FIS data not being received. FIS graphical METAR overlay is enabled and displayed.
	VDL radio fault. FIS graphical METAR overlay is available but not displayed.
	VDL radio fault. FIS graphical METAR overlay is enabled and displayed.

NEXRAD PAGE



- 1 **Range Scale** - Indicated selected range.
- 2 **Available Functions** - Displays icons representing data available (black) and displayed (color).
- 3 **North Pointer** - Indicates north.
- 4 **Range Rings** - Outer ring radius is selected range and inner ring radius is one half the selected range.
- 5 **MODE** - Indicates the weather product being displayed.
- 6 **Control Knob Icon** - Displayed when the Control Knobs are available for cycling through the graphical weather products.
- 7 **Joystick Label** - Indicates joystick is active and can be used to pan map.
- 8 **No Coverage Area** - Crosshatch pattern indicates area of no coverage.
- 9 **Precipitation** - NEXRAD precipitation returns.
- 10 **Aircraft Symbol** - Indicates present aircraft position and heading (if available) or track.
- 11 **Age of Data** - Age of the data based on current time minus NEXRAD issue time.
- 12 **Age Status Bar** - Indicates percentage of age versus elapsed time before expiration. The bar will be green the first 50% then turn yellow.

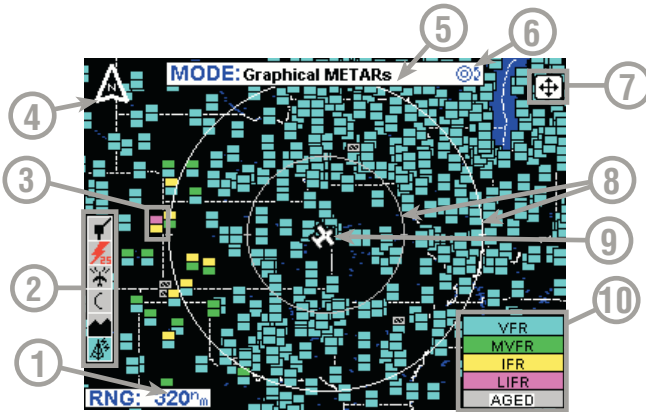
NEXRAD INTENSITY

Precipitation intensity is depicted using colors as follows:

Magenta	Intense	Level 5-8	50+ dBZ
Red	Heavy	Level 3-4	40-50 dBZ
Yellow	Moderate	Level 2	30-40 dBZ
Green	Light	Level 1	15-30 dBZ

NEXRAD LEGEND		
Intensity	dBZ	Level
Intense	50+	5-8
Heavy	40-50	3-4
Moderate	30-40	2
Light	15-30	1
	0-15	0
No Data		

GRAPHICAL METAR PAGE

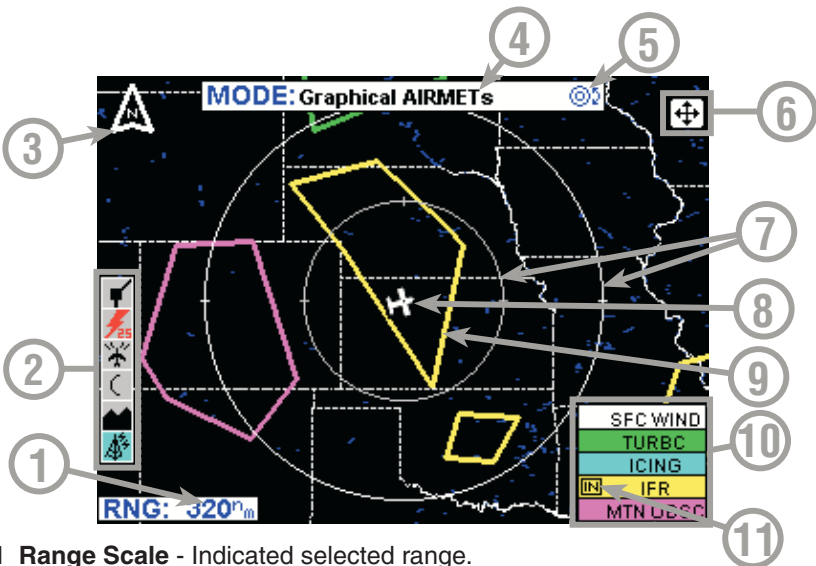


- 1 Range Scale** - Indicated selected range.
- 2 Available Functions** - Displays icons representing data available (black) and displayed (color).
- 3 Graphical METAR Icon** - Ceiling indicated in top box, visibility in the bottom box and ICAO identifier of issuing airport. Note that ICAO identifiers are not displayed on all range settings.
- 4 North Pointer** - Indicates north.
- 5 MODE** - Indicates the weather product being displayed.
- 6 Control Knob Icon** - Displayed when the Control Knobs are available for cycling through the graphical weather products.
- 7 Joystick Label** - Indicates joystick is active and can be used to pan map.
- 8 Range Rings** - Outer ring radius is selected range and inner ring radius is one half the selected range.
- 9 Aircraft Symbol** - Indicates present aircraft position and heading (if available) or track.
- 10 METAR Color Key** - Colors indicating flight rules pertaining to ceiling and visibility.

GRAPHICAL METAR COLOR CODING

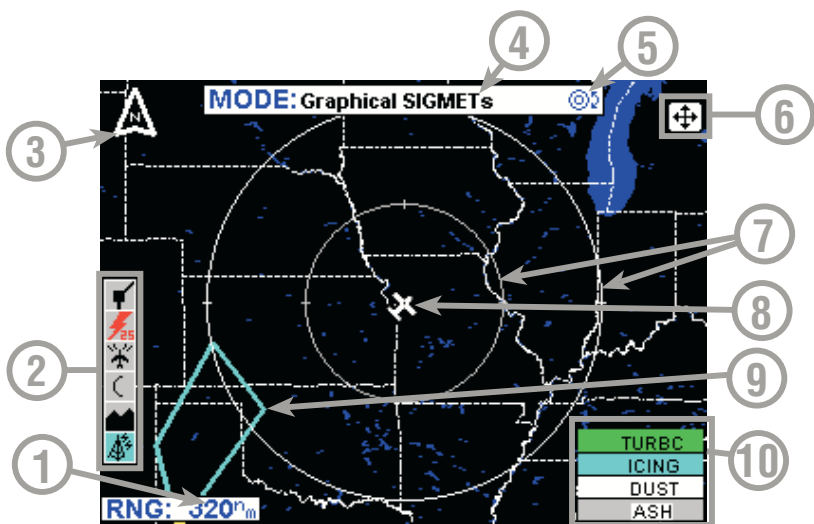
METAR LEGEND	Ceiling (Ft)	Visibility Statute Mi
VFR	>3000	>5
MVFR	1000 to 3000	3 to 5
IFR	500 to <1000	1 to <3
LIFR	<500	<1
Age >75min see Text Report		
NOT REPORTED		

GRAPHICAL AIRMET PAGE



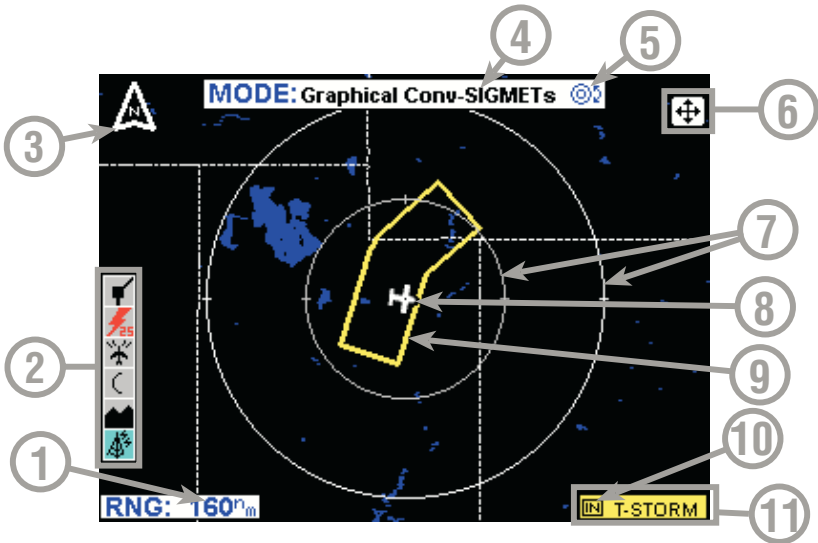
- 1 **Range Scale** - Indicated selected range.
- 2 **Available Functions** - Displays icons representing data available (black) and displayed (color).
- 3 **North Pointer** - Indicates north.
- 4 **MODE** - Indicates the weather product being displayed.
- 5 **Control Knob Icon** - Displayed when the Control Knobs are available for cycling through the graphical weather products.
- 6 **Joystick Label** - Indicates joystick is active and can be used to pan map.
- 7 **Range Rings** - Outer ring radius is selected range and inner ring radius is one half the selected range.
- 8 **Aircraft Symbol** - Indicates present aircraft position and heading (if available) or track.
- 9 **AIRMET Boundary** - Color coded line indicating the boundaries of an AIRMET.
- 10 **AIRMET Color Key** - Colors indicating AIRMET type.
- 11 **IN** - Indicates the current aircraft position is "IN" an IFR AIRMET.

GRAPHICAL SIGMET PAGE



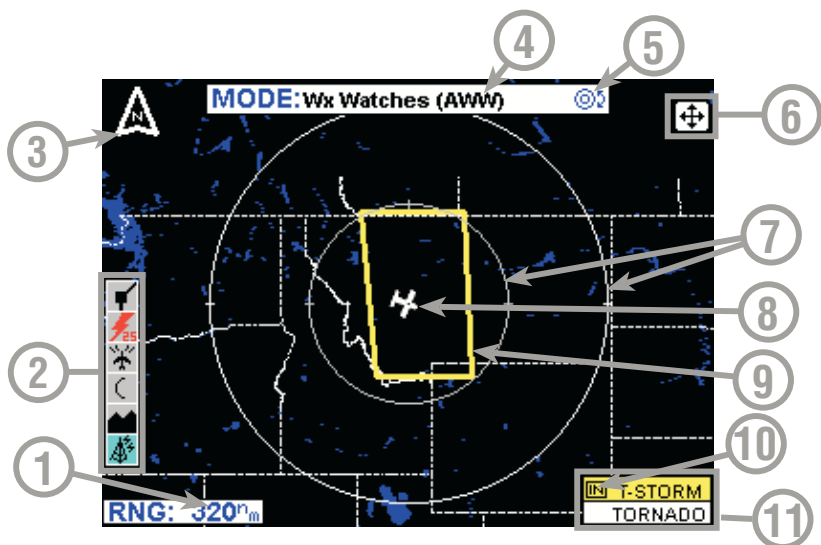
- 1 **Range Scale** - Indicated selected range.
- 2 **Available Functions** - Displays icons representing data available (black) and displayed (color).
- 3 **North Pointer** - Indicates north.
- 4 **MODE** - Indicates the weather product being displayed.
- 5 **Control Knob Icon** - Displayed when the Control Knobs are available for cycling through the graphical weather products.
- 6 **Joystick Label** - Indicates joystick is active and can be used to pan map.
- 7 **Range Rings** - Outer ring radius is selected range and inner ring radius is one half the selected range.
- 8 **Aircraft Symbol** - Indicates present aircraft position and heading (if available) or track.
- 9 **SIGMET Boundary** - Color coded line indicating the boundaries of a SIGMET.
- 10 **SIGMET Color Key** - Colors indicating SIGMET type.

GRAPHICAL CONVECTIVE SIGMET PAGE



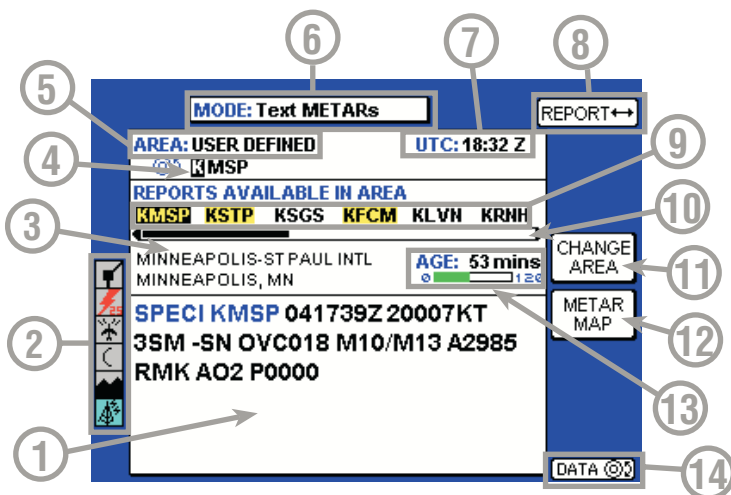
- 1 **Range Scale** - Indicated selected range.
- 2 **Available Functions** - Displays icons representing data available (black) and displayed (color).
- 3 **North Pointer** - Indicates north.
- 4 **MODE** - Indicates the weather product being displayed.
- 5 **Control Knob Icon** - Displayed when the Control Knobs are available for cycling through the graphical weather products.
- 6 **Joystick Label** - Indicates joystick is active and can be used to pan map.
- 7 **Range Rings** - Outer ring radius is selected range and inner ring radius is one half the selected range.
- 8 **Aircraft Symbol** - Indicates present aircraft position and heading (if available) or track.
- 9 **Convective SIGMET Boundary** - Color coded line indicating the boundaries of a Convective SIGMET.
- 10 **IN** - Indicates the current aircraft position is "IN" a thunderstorm Convective SIGMET.
- 11 **Convective SIGMET Color Key** - Colors indicating Convective SIGMET type.

GRAPHICAL ALERT WEATHER WATCHES PAGE (AWW)



- 1 **Range Scale** - Indicated selected range.
- 2 **Available Functions** - Displays icons representing data available (black) and displayed (color).
- 3 **North Pointer** - Indicates north.
- 4 **MODE** - Indicates the weather product being displayed.
- 5 **Control Knob Icon** - Displayed when the Control Knobs are available for cycling through the graphical weather products.
- 6 **Joystick Label** - Indicates joystick is active and can be used to pan map.
- 7 **Range Rings** - Outer ring radius is selected range and inner ring radius is one half the selected range.
- 8 **Aircraft Symbol** - Indicates present aircraft position and heading (if available) or track.
- 9 **Weather Watch Boundary** - Color coded line indicating the boundaries of an Alert Weather Watch.
- 10 **IN** - Indicates the current aircraft position is "IN" a severe thunderstorm watch area.
- 11 **Weather Watch Color Key** - Colors indicating Alert Weather Watch type.

FIS TEXT PAGE



- 1 **Text Field** - The encoded weather report is displayed in this field.
- 2 **Available Functions** - Displays icons representing data available (black) and displayed (color).
- 3 **Selected Report Info** - Displays name, city and state of selected report.
- 4 **Selected Area Identifier** - Displays the identifier of the area selection.
- 5 **Area Selection** - Pressing the **CHANGE AREA** soft key cycles between Destination, Flightplan WPT, Nearest and User Defined.
- 6 **Mode** - Pressing the **MODE** key will display the **SELECT FIS PRODUCT** Menu.
- 7 **UTC** - Current UTC time.
- 8 **Report** - Each horizontal movement of the joystick will move the cursor over the next report in the **AVAILABLE REPORTS** field.
- 9 **Available Reports** - Shows available reports based on the selection in the **AREA** field. Special, urgent or amended reports are highlighted in yellow.
- 10 **Scroll Bar** - Indicates there are more available reports than can be displayed on the screen. Move the joystick left/right to cycle through the reports.
- 11 **Change Area Soft Key** - Cycles the **AREA** field between Destination, Flightplan Waypoint (FLPN WPT), Nearest and User Defined.
- 12 **METAR Map Soft Key** - When this key is pressed the graphical METAR page is displayed with the map centered on the selected METAR. This is only available when valid data for graphical METARs is being received.
- 13 **Age of Report** - Age of report based on UTC time minus time of report. The bar indicates percentage of age versus elapsed time before expiration. The bar will be green the first 50% then turn yellow.
- 14 **Knob Function Label** - Indicates the knob function is set to **DATA** input (USER DEFINED) or **SCAN** data (FLPN WPT).

MODE: Text METARs REPORT ↔

AREA: FPLH WPT
 UTC: 16:21 Z
 DS3

REPORTS AVAILABLE IN AREA
 KMMK KSTJ

KANSAS CITY INTL
 KANSAS CITY, MO

AGE: 27 mins

METAR MAP

METAR KMCI 081453Z 35005KT
 4SM HZ OVC022 09/06 A2975 RMK
 A02 SLP073 T00890061 51012

CHANGE AREA

SCAN

MODE: TAFs REPORT ↔ SCROLL ↓

AREA: USER DEFINED
 UTC: 19:19 Z
 DS3

REPORTS AVAILABLE IN AREA
 KMTJ KGUC KALS

FOUR CORNERS REG
 FARMINGTON, NM

AGE: 7 hrs

CHANGE AREA

TAF KFMN 241125Z 241212
 08007KT P6SM SCT250
 FM1600 VRB03KT P6SM FEW250
 BECMG 2022 25013G21KT
 SCT120 SCT250
 FM0200 29008KT P6SM SCT150

DATA

MODE: Text METARs REPORT ↔

AREA: DESTINATION
 KOSH
 UTC: 16:37 Z

REPORTS AVAILABLE IN AREA
 KOSL KFLD KATW KSBM KUNU KGRB

WITTMAN REG
 DSHKOSH, WI

AGE: 53 mins

METAR MAP

METAR KOSH 241553Z
 20020G24KT 10SM FEW060 18/12
 A2974 RMK A02 SLP070
 T01780117

CHANGE AREA

MODE: TAFs REPORT ↔ SCROLL ↓

AREA: NEAREST
 UTC: 19:20 Z

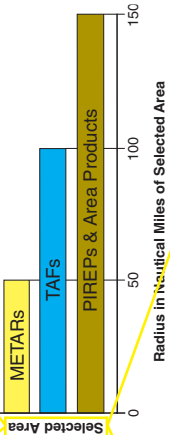
REPORTS AVAILABLE IN AREA
 KOTL KOSM KBRL KCID KUIN

OTTUMWA INDUSTRIAL
 OTTUMWA, IA

AGE: 1 hour







CHANGE AREA

TAF KOTM 241725Z 241818
 30015KT P6SM SCT015 BKN060
 TEMPO 1819 5SM -TSRA
 BKN012CB
 FM2000 31024G34KT P6SM
 SCT020 BKN080

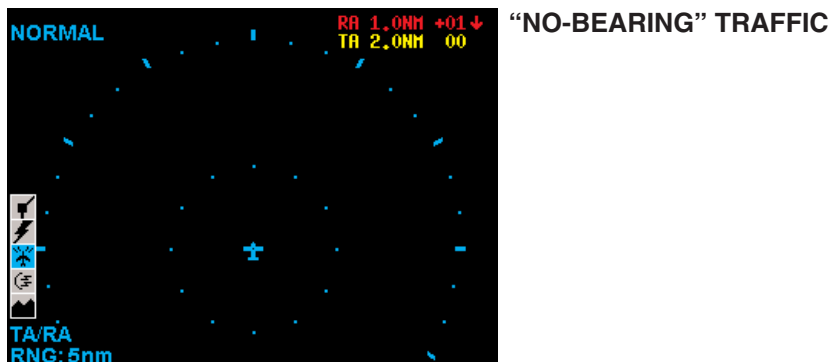


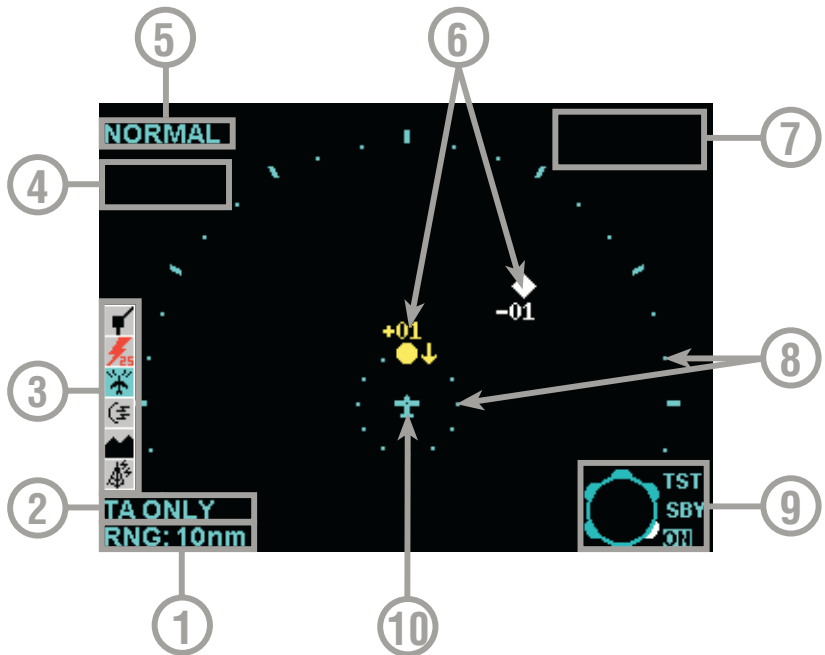
TRAFFIC AVOIDANCE

AVAILABLE TRAFFIC FUNCTION ICONS

Icon	Description
	Standby traffic sensor being displayed.
	Active traffic information being displayed.
	Traffic sensor in standby mode, not being displayed.
	TIS service not available.
	Traffic sensor active, not being displayed.
	Traffic sensor data invalid / not being displayed.

TCAS/TAS SYMBOLOGY



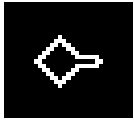


- 1 **Display Range - RNG:##nm**
- 2 **TAS (TCAS) Operating Mode - TAS (TCAS) TST, TAS (TCAS) SBY, TA Only, TA/RA or TAS (TCAS) Fail**
- 3 **Available Functions** - Displays icons representing data available (black) and displayed (color)
- 4 **Current Flight Level - FL:###**
- 5 **Altitude Volume - NORMAL, ABOVE, BELOW or UNRESTRICTED** (not available in all configurations)
- 6 **Traffic Intruder Symbols** - Indicates type of traffic, altitude of traffic and vertical trend of traffic.
- 7 **“No Bearing” Intruder Display Area - AA #.#NM ±XX↑ (Where AA is TA or RA)**
- 8 **Range Rings** - Outer ring radius is selected range, inner ring radius is always two nautical miles
- 9 **Outer Knob Icon** - Shows current knob selection
- 10 **Aircraft Symbol** - Stylized airplane indicating aircraft position

TIS SYMBOLOGY



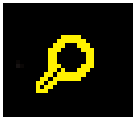
PROXIMITY INTRUDER TRAFFIC



PROXIMITY INTRUDER NON-ALTITUDE REPORTING (NAR) TRAFFIC



TRAFFIC ADVISORY (TA)

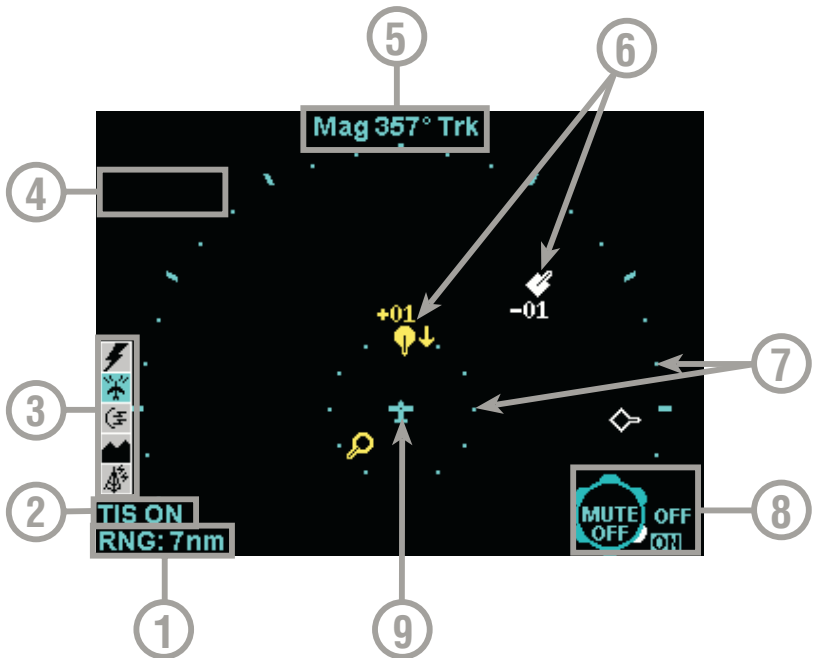


TRAFFIC ADVISORY NON-ALTITUDE REPORTING (NAR)



TIS Capable Mode S Radar Sensor Sites

Covered by US Pat. 6512975

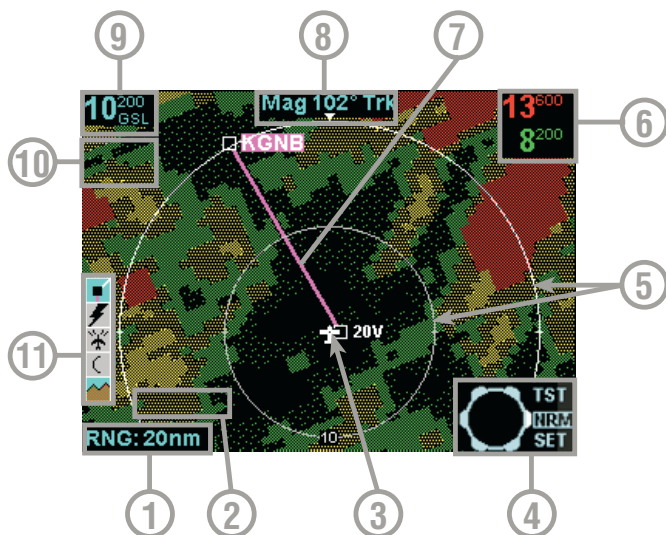


- 1 **Display Range - RNG:##nm**
- 2 **TIS Operating Mode - TIS ON, TIS OFF or TIS FAIL**
- 3 **Available Functions** - Displays icons representing data available (black) and displayed (color).
- 4 **Current Flight Level - FL:###**
- 5 **Display Orientation** - When in magnetic heading-up orientation, **Mag###° Hdg**; when in magnetic track-up orientation, **Mag###° Trk**; when heading or track is not available from the system, **No Hdg or Trk**. The received traffic bearing and ground track is corrected when the system has heading or track.
- 6 **Traffic Intruder Symbols** - Indicates type of traffic, altitude of traffic, vertical trend of traffic and ground track of traffic.
- 7 **Range Rings** - Outer ring radius is selected range, inner ring radius is always two nautical miles.
- 8 **Knob Icon** - Outer knob selects TIS ON or OFF. Inner knob selects MUTE ON or MUTE OFF for muting of "TIS Unavailable" audio message.
- 9 **Aircraft Symbol** - Stylized airplane indicating aircraft position.

TERRAIN AVOIDANCE

AVAILABLE TERRAIN FUNCTION ICON

Icon	Description
	EGPWS with warnings enabled, being displayed.
	EGPWS with warnings disabled, being displayed.
	EGPWS with warnings enabled, not being displayed.
	EGPWS with warnings disabled, not being displayed.
	EGPWS data invalid / not being received.



- 1 **Display Range - RNG:###nm**
- 2 **Terrain Awareness State** - Displays **EGPWS TEST** when self-test is active, **TERR FAIL** when terrain is INOP due to a fault, **TERR N/A** when terrain is not available (no fault) and **TERR INHBT** when Terrain Awareness Warnings have been manually inhibited. The terrain picture will be blacked out if the state is **TERR FAIL** or **TERR N/A** (Some installations will also be blacked out for **TERR INHBT**).
- 3 **Aircraft Symbol** - Stylized airplane except in north-up mode when it is a plus symbol. Indicates present position.
- 4 **Outer Rotary Knob** (not present for all installations) - Allows selection of Normal (**NRM**), Test (**TST**) or Settings (**SET**) mode. Default is Normal.
- 5 **Range Rings** - Outer ring radius is selected range, inner ring radius is one half the selected range. Value of inner ring displayed at bottom of inner ring in 360° views and at the left edge of the inner ring in 120° views.
- 6 **EGPWS Peaks Elevation** (not present for all installations) - Maximum peaks elevation displayed over Minimum peaks elevation, #####
- 7 **GPS Flight Plan Overlay** - Current GPS flight plan.
- 8 **Display Orientation** - When in magnetic heading-up orientation, **Mag###° Hdg**; when in true heading-up orientation, **Tru###° Hdg**; when in magnetic track-up orientation, **Mag###° Trk**; when in true track-up orientation, **Tru###° Trk**; when in north-up orientation, **NORTH**
- 9 **EGPWS Geometric Altitude** (not present for all installations) - ##### **MSL** (Mean Sea Level) or ##### **GSL** (Geodetic Sea Level) depending on system configuration.
- 10 **Check Altitude Flag Window - CHECK ALT**
- 11 **Icon Bar** - Icons representing data available (black) and displayed (color).

Honeywell International Inc.
One Technology Center
23500 West 105th Street
Olathe, KS 66061
Telephone (913) 712-0400
FAX 913-712-1302

Copyright ©2000-2005 Honeywell International Inc.
All rights reserved.

006-18223-0000 Printed in U.S.A.
Revision 6 Sep/2005

Honeywell